

JEFFERSON COUNTY CONSERVATION DISTRICT

75TH ANNIVERSARY RECOGNITION BANQUET



SEPTEMBER 25, 2021

6:00 P.M.

Walston Club

Walston, PA

We, the present Board of Directors of the Jefferson County Conservation District (JCCD), welcome you to this historic event and invite you to reflect with us on the heritage embodied in the organization and the people who have enabled its past and present while contributing to the future.

Reflection on the past necessarily includes some speculation on the founding of the soil conservation movement in the Commonwealth of Pennsylvania and elsewhere.

World War II brought together millions of military personnel from all the then forty-eight states. One can only guess that those young folks would talk about their home areas during rare quiet moments. Thus, men who lived in the Rocky Mountains mingled with ones who had lost homes and family land during the devastation of the "Dust Bowl" of the 1930's.

Those memories were shared with personnel from the Western plains where wildfires were common and then interspersed with Pennsylvania troops, many of whom had grown up on then prevalent family farms.

In fact, data shows that in 1940 there were 2,356 farms in Jefferson County encompassing almost half of the total acreage in croplands, woodlands and plowable pastures.

Perhaps thoughts of how to combat the effects of farming practices, construction methods, and other events which affected the land, were born in those conversations when thoughts of "home" rested in the hearts of all those fighting for freedom.

Farmers were among those who were considered "critical" to the War effort and exempt from military service. In 1946, the first year of peace after World War II, it was a Jefferson County farmer who took a bold step in soil conservation and the roots of what is now the Jefferson County Conservation District.

Although derided initially for his decision, the late Donald T. Smith laid out the first tract of contour plowed acreage in the State of Pennsylvania on his farm in the Beechwoods of Washington Township, Jefferson County. The parcel was one-half mile long.

Prevailing practice at the time was to plow in straight rows, regardless of the "lay of the land".

As the JCCD was in its infancy as the Jefferson County Soil Conservation District, they were basing early decisions on a 1934 soil erosion survey conducted by then- Pennsylvania State College, now Penn State University, which showed 25% to 75% of the topsoil was gone as of that mid-Great Depression era.

Donald T. Smith Farm
(9-28-1939)



Donald T. Smith Farm
(5-15-1969)



-Aerial Photography courtesy of: Historical Aerial Viewer, <https://datacommons.maps.arcgis.com>-

Smith, and others, launched their cooperative effort with a written application submitted to the State of Pennsylvania on March 1, 1946 to create a Soil Conservation District in Jefferson County. At that time, U.S. Mail was the prime way to communicate. Jefferson County's bid to become a conservation district was the third one received in Harrisburg as determined by its postmark. That historic moment would be followed on July 5, 1946 when the Jefferson County Commissioners officially organized the Jefferson County Soil Conservation District.

187

RE: RESOLUTION APPOINTING DIRECTORS OF THE
JEFFERSON COUNTY SOIL CONSERVATION DISTRICT

Jul 5, 1946

Meeting of the Commissioners of Jefferson County held at their office in the Court House July 5, 1946. Members present: Dale Grant and Arthur I. Eberhart. Dale Grant presiding.

WHEREAS, under provision of the Act No. 217 approved May 15, 1945, Jefferson County was declared a Soil Conservation District and the State Soil Conservation Commission gave notice that the following organizations were entitled to make nominations for members of the Board of Directors, said organizations are listed as follows, to-wit:

Jefferson County National Farm Loan Association
Jefferson County Guernsey Breeders' Association
Jefferson County Jersey Association
Jefferson County Potato Growers' Association
Jefferson County Artificial Breeding Cooperative,
and

WHEREAS, said organizations nominated the required number of nominees at a meeting of the official delegates properly called by the County Commissioners; and

WHEREAS, the County Commissioners have duly considered the list of nominees and desire to name the Board of Directors and their respective terms of office:

NOW, THEREFORE, be it resolved by the Commissioners of the County of Jefferson that the following named persons are hereby appointed as directors of the Jefferson County Soil Conservation District to serve for the term of years set opposite their names, as follows, to-wit:

Donald Smith	Term	Four Years
Silas A. Weaver	Term	Three Years
H.E. Shields	Term	Two Years
Irvin J. Allshouse	Term	One Year
Arthur I. Eberhart	Term	One Year

Said appointment being made under the provisions of Section 7, of Act No. 217 approved May 15, 1945.

Adopted at a regular meeting of the Board of County Commissioners held this 5th day of July, 1946.

188

Re: Soil Conservation District
Page 2

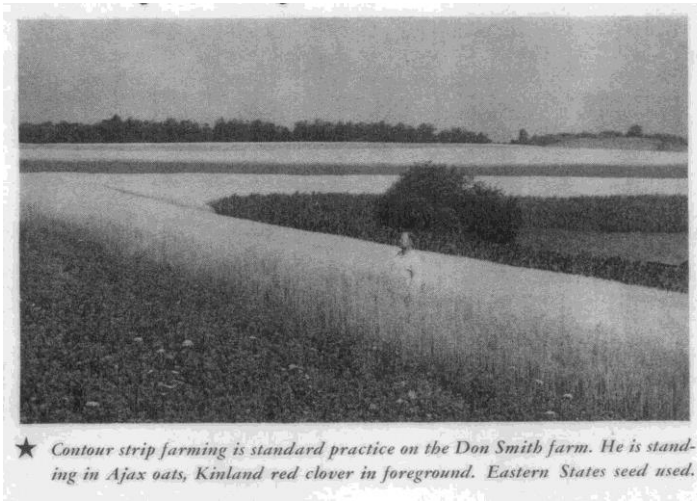
Motion for adjournment by Dale Grant.
Motion seconded by Arthur I. Eberhart. Unanimous vote in favor of the motion.

Dale Grant
Arthur I. Eberhart
Commissioners of Jefferson County

Attest:
David R. Neuschwan
Commissioner's Clerk

The 1946 resolution document from the Commissioners of Jefferson County.

Smith was considered a pioneer in the new movement to better understand, work with and direct water run-off as well as associated matters. He further contributed to the effort by constructing the first conservation district pond on his farm. Later, Smith became the second President of the State Association of Soil Conservation District Directors.



In 1951 Smith was awarded the Conservation Farmer of the year award.

Those initial steps taken on the Beechwoods location would herald a change in the way fields, hill sides and water run-off were managed not only locally, but throughout the Commonwealth and beyond.

In 1963, then-directors Ross Reitz and Mervin Mowrey approached the late George Miller asking him to become the first Executive Secretary/Treasurer for the Jefferson County Soil Conservation District. While continuing his position as a Vocational Agriculture teacher in the Brockway Area School District, Miller accepted the part-time position which paid Two Dollars per hour and operated the office from his Brockway home.



October 1960 District meeting



George Miller 1960s

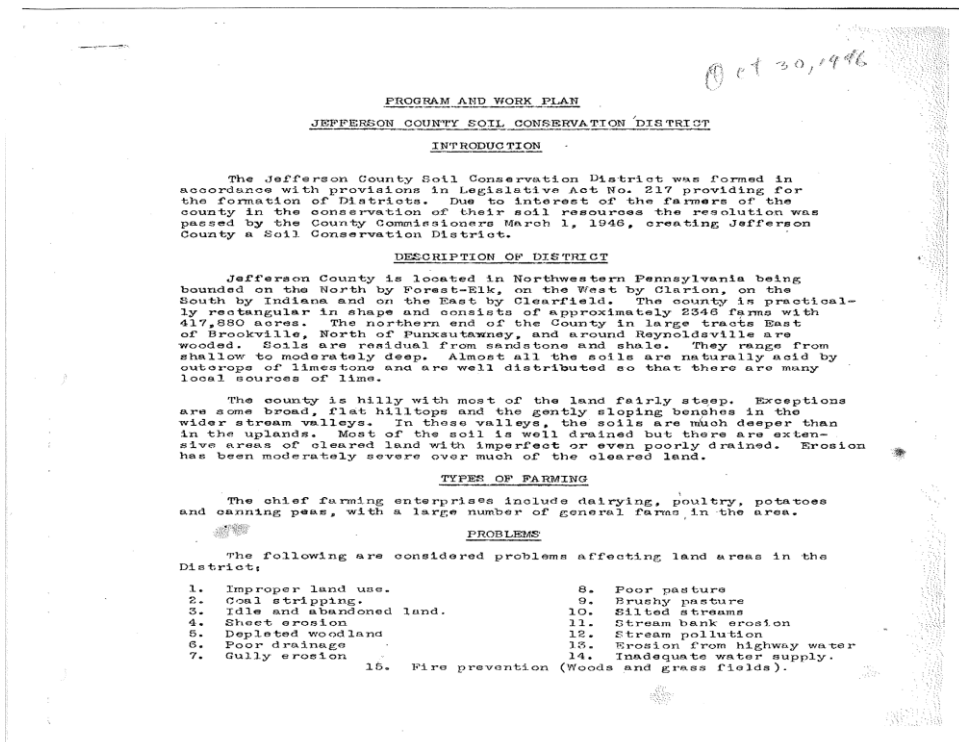
That hiring was a first among all districts in the state. Miller also served as the first Executive Secretary for the PA Association of Conservation Districts (PACD). He was followed by the late Watson Luper for 2 years and then the late Roby Grose who served as JCCD's first "District Manager" for nearly 30 years. Deborah Wilson succeeded Grose as JCCD Manager and served for over 30 years until her retirement. The Manager post is now occupied by Shaun Wessell, who has filled multiple positions at the District over the last 20+ years.

Fifteen years ago, as the JCCD was celebrating their Sixtieth Anniversary, Miller expressed his thoughts about the mission of a conservation district, saying: "We had to teach water to walk, not run, downhill." His passion for conservation continued through the years as he served for 26 years as a Director and then an additional 18 as an Associate Director of the JCCD until his passing in 2021.

Some of the new "practices" being developed seventy-five years ago, were on an experimental basis rooted in the 1930's Civilian Conservation Corps. Modern vestiges of the work done by the CCC can still be found in Pennsylvania's State Parks, forests, tourist cabins and many other areas.

Over the years, a number of "practices" were developed to preserve farmland including contour crop planting, tile drains, diversion and drainage terraces, ditching, and pasture improvements. One previous "practice" which has not been utilized for many years involved using sticks of dynamite to blast open ditches.

The 1946 Jefferson County Soil Conservation District Program and Work Plan.



OBJECTIVES

The objectives of the Jefferson County Soil Conservation District will be to help farmers control erosion, to conserve soil and soil fertility, improve woodlands, drain and improve wet land, aid in the prevention of floods and make needed land use adjustments necessary to maintain the tax base, maintain and improve the physical condition of the land and economic condition of the people in the District.

PLAN OF ACTION

1. Educational Program

The educational program will be carried out to acquaint land owners and operators, as well as others interested in the general welfare of the county, with the seriousness of erosion and related problems and to point out how they can be solved. The educational program will also acquaint farmers and others with the objectives of the District and the assistance that is available through the District in the planning and carrying out of the conservation programs on individual farms as well as community activities necessary to control soil and water losses.

2. Planning of Farms and Group Enterprises.

The District will furnish assistance in the planning of soil and water conservation programs for individual farms as well as developing plans for group enterprises. These plans are to be based on needs determined by a Soil Conservation survey and the economic set-up and needs of the individual farmers. The practices to be used in developing the conservation plans may include one or more of the following as required to make a complete conservation plan.

- | | |
|---|--|
| 1. Crop rotations. | 16. Field and gully planting. |
| 2. Cover crops. | 17. Windbreak planting. |
| 3. Crop residue management. | 18. Fencing. |
| 4. Contour planting. | 19. Farm ponds |
| 5. Contour strip cropping. | 20. Fish pond management |
| 6. Diversions. | 21. Hedges |
| 7. Terraces. | 22. Mulching |
| 8. Outlets and farm water courses | 23. Rip rap |
| 9. Establishment of perennial hay | 24. Stream erosion control |
| 10. Individual farm drains. | 25. Stream channel improvement |
| (underground and open) | 26. Structures |
| 11. Pasture treatment. | 27. Wildlife area management |
| 12. Clearing and obstruction removal | 28. Wildlife borders |
| 13. Contour furrows. | 29. Woodland and Wildlife area protection. |
| 14. Pasture management | |
| 15. Woodland improvement and Harvest cutting. | |

3. Application of Conservation Practices.

The District will furnish technical assistance necessary in the installation of the conservation practices called for in the conservation plan. Other assistance such as heavy equipment and planting material will be made available to land owners and operators in installing conservation practices insofar as they are available to the District. This assistance may take the form of material or equipment. Cost to operate will depend upon conditions present at the time of installation.

ASSISTANCE FROM AGENCIES AND ORGANIZATIONS

In carrying out the above plan the directors of the District recognize the need for assistance from all agencies and organizations in a position to cooperate in the fulfillment of the above-mentioned objectives.

Some of the agencies and organizations which should cooperate and assist are as follows:

- | | |
|---------------------------------|--|
| Extension Service | Agricultural Production and Marketing Adm. |
| Vo-Agriculture | Farm Credit Administration |
| County Commissioners | Farm Security Administration |
| Grange | 4-H Clubs |
| Soil Conservation Service | FPA |
| State Dept. of Forests & Waters | Pennsylvania Potato Growers Ass'n. |
| State Dept. of Highways | Experiment Station College |
| State Game Commission | State Department of Agriculture |
| Sportsmen's Organizations | Pennsylvania State College |
| Civic Organizations. | ---- and others. |

The District Directors will work through the State Soil Conservation Commission in securing the assistance of Federal and State Agencies. The directors have asked for the assistance of the Soil Conservation Service and the 3-way Memorandum between the District, Commission and Soil Conservation Service. Assistance from other Federal and State agencies or organizations will be requested as needed.

JEFFERSON COUNTY SOIL CONSERVATION DISTRICT

Donald T. Smith, Chairman

Silas A. Weaver, Secretary

Talking about new ways to accomplish tasks affecting the land is one thing, but it is people who bring those ideas to the forefront and fruition that make a difference. During its seven-and-a-half decades of service, JCCD has been fortunate to have dedicated employees as well as volunteer directors and associate directors all committed to the common purpose of conservation.

2021 District Directors



(from left to right)

Allen Campbell, Sec/Treasurer (Public Director); Porter Duvall, Chairman (Farmer Director);
Herb Bullers, Vice-Chairman (Commissioner Director); Theresa Shick, (Farmer Director);
Tom McFarland, (Public Director); Terry Shields, (Farmer Director);
Sam Farcus, (Public Director)

Associate Directors (not pictured)

Jerry Chamberlin, Laura Lynn Yohe, Tom Kundrich, Dennis Day, Deborah Wilson

2021 Staff



(from left to right)

Rebecca Gaston, Conservation Technician; Shaun Wessell, District Manager;
Evan DeLong, Watershed Specialist; Megan Whitlatch, ACT/Nutrient Management;
Christine Hughes, Administrative Assistant; Carl Johnson, Resource Technician;
Dana Grabowski, District Technician

JEFFERSON COUNTY CONSERVATION DISTRICT PAST DIRECTORS

*Chairman

1946-1948

*Donald T. Smith
Silas Weaver
Merton E. Shields
J. Irvin Allshouse
Arthur Eberhart

1949

*Donald T. Smith
J. Irvin Allshouse
Merton E. Shields
N. M. Aaron
Hugh Haggerty

1950

*Donald Smith
Merton E. Shields
David Kunselman
J. Irvin Allshouse
N. M. Aaron

1951

*Donald T. Smith
Merton E. Shields
J. Irvin Allshouse
N. M. Aaron
John Baker

1952

*Donald T. Smith
Merton E. Shields
Irvin J. Allshouse
N. M. Aaron
John Baker

1953

*Donald Smith
J. Irvin Allshouse
Fred Depp
N. M. Aaron
Hugh Haggerty

1954

*Donald Smith
Fred Depp
J. Irvin Allshouse
James Rhodes
Hugh Haggerty

1955

*Donald Smith
Fred Depp
J. Irvin Allshouse
James Rhodes
Hugh Haggerty

1956

*Donald Smith
Fred Depp
J. Irvin Allshouse
James Rhodes
Hugh Haggerty

1957

*Donald T. Smith
Fred Depp
J. Irvin Allshouse
James Rhodes
John Baker

1958

*Donald T. Smith
Fred Depp
J. Irvin Allshouse
James Rhodes
Ross Reitz

1959

*Donald T. Smith
Fred Depp
J. Irvin Allshouse
James Rhodes
Ross Reitz

1960

*Ross Reitz
Fred Depp
Mervin Mowrey
James Rhodes
William Walter

1961

*Ross Reitz
Fred Depp
Mervin Mowrey
James Rhodes
William Walter

1962

*Ross Reitz
Mervin Mowrey
James Rhodes
Robert Allshouse
William Walter

1963

*Ross Reitz
Mervin Mowrey
James Rhodes
Robert Allshouse
William Walter

1964

* Robert Allshouse
Charles Verbeke
James Rhodes
Donald T. Smith
Frank Reed

1965

* Donald T. Smith
Charles Verbeke
James Rhodes
John Hollis
Wayne Minich

1966

* William C. Smith
John Hollis
Charles Verbeke
James Rhodes
Frank Reed

1967

* William C. Smith
John Hollis
Charles Verbeke
Robert Allshouse
Frank Reed

1968

*William C. Smith
Charles Verbeke
John Hollis
Kay Reitz
Leonard Ross Work
Samuel Volpe
John Caldwell

1969

* Bernard Shick
William C. Smith
Charles Verbeke
Kay Reitz
Leonard Ross Work
Samuel Volpe
John Caldwell

1970

*Willian C. Smith
George Miller
Bernard Shick
Samuel Volpe
David Mowrey
Kay Reitz
John Caldwell

1971

*George Miller
William C. Smith
Bernard Shick
Samuel Volpe
David Mowrey
Kay Reitz
John Caldwell

1972

*William C. Smith
George Miller
Bernard Shick
Samuel Volpe
David Mowrey
Kay Reitz
Blake Means

1973

*William C. Smith
George Miller
Bernard Shick
Samuel Volpe
Glenn Caylor
James McCarrier
Blake Means

1974

*William C. Smith
George Miller
Bernard Shick
Glenn Caylor
Ed Jekielek
Blake Means
Ammon Brosius

1975

*William C. Smith
George Miller
Bernard Shick
Glenn Caylor
Edward Jekielek
Ammon Brosius
Blake Means

1976-1977

*William C. Smith
George Miller
Bernard Shick
Glenn Caylor
Edward Jekielek
Paul Kennis
Andrew Laska

1978

* George Miller
Paul Kennis
William Smith
C. Robert Steele
Edward Jekielek
Bernard Shick
Andrew Laska

1979

* George Miller
C. Robert Steele
Edward Jekielek
William Smith
Paul Kennis
Bernard Shick
Andrew Laska

1980

* George Miller
Paul Kennis
William Keown
William C. Smith
Bernard Shick
C. Robert Steele
Andrew Laska

1981

* George Miller
Paul Kennis
William Gresock
William C. Smith
C. Robert Steele
William Keown
Andrew Laska

1982

*C. Robert Steele
William Keown
Sandra Matthews
William Gresock
Paul Kennis
William C. Smith
Andrew Laska

1983

*C. Robert Steele
Sandra Matthews
William Gresock
William Keown
Paul Kennis
Walter Bullers
Andrew Laska

1984-1985

*C. Robert Steele
Walter Bullers
Sandra Matthews
William Gresock
William Keown
William Smith
Andrew Laska

1986

*William Smith
Sandra Matthews
William Keown
William Gresock
George Miller
Jerry Chamberlin
Andrew Laska

1987

*George Miller
William Smith
Sandra Matthews ½ year
Linda Yohe ½ year
William Gresock
William Keown
Jerry Chamberlin
Andrew Laska

1988

*George Miller
C. Robert Steele
Linda Yohe
William Gresock
William Keown
Jerry Chamberlin
Andrew Laska

1989

*George Miller
C. Robert Steele
Linda Yohe
William Keown
William Gresock
Jerry Chamberlin
Andrew Laska

1990

* C. Robert Steele
George Miller
William Keown
Linda Yohe
William Gresock
Jerry Chamberlin
Anson Brosius

1991

* C. Robert Steele
George Miller
William Keown
Linda Yohe
William Gresock
Jerry Chamberlin
Anson Brosius

1992

*George Miller
Jerry Chamberlin
Linda Yohe
William Keown
William Gresock
Vern Martz
Lugene Inzana

1993

*Lugene Inzana
Jerry Chamberlin
William Keown
Linda Yohe
Vern Martz
George Miller
Andrew Laska
Mark Buhite

1994

*Lugene Inzana
Sandra Miller
Mark Buhite
Bill Keown
Bob Steele
Vern Martz
George Miller

1995

*Lugene Inzana
George Miller
Mark Buhite
William Keown
Sandra Miller
Vern Martz
William Gresock

1996-1997

*Lugene Inzana
George Miller
Mark Buhite
William Gresock
William Keown
Porter Duvall
Comm. Ira Sunderland

1998

*Porter Duvall
George Miller
Herb Landes
William Gresock
William Keown
Jack Corbin
Comm. Ira Sunderland

1999

*Porter Duvall
George Miller
Herb Landes
William Gresock
William Keown
Jack Corbin
Comm. Ira Sunderland

2000

*Porter Duvall
George Miller
Herb Landes
William Gresock
Allen Campbell
Jack Corbin
Comm. Ira Sunderland

2001-2002

*Herb Landes
Porter Duvall
Jack Corbin
George Miller
Allen Campbell
William Gresock
Comm. Ira Sunderland

2003

*Herb Landes
Porter Duvall
Jack Corbin
Chris Mitterer
William Gresock ½ year
Robert Beatty ½ year
Allen Campbell
Comm. Ira Sunderland

2004

*Herb Landes
Porter Duvall
Jack Corbin
Chris Mitterer
Robert Beatty
Allen Campbell
Commissioner Paul Corbin

2005

*Jack Corbin
Porter Duvall
Herb Landes
Chris Mitterer
Robert Beatty
Allen Campbell
Commissioner Paul Corbin

2006

*Porter Duvall
Allen Campbell
Herb Landes
Chris Mitterer
Robert Beatty
Theresa Shick
Commissioner Paul Corbin

2007

*Herb Landes
Porter Duvall
Allen Campbell
Chris Mitterer
Theresa Shick
Robert Beatty ½ year
Jack Corbin ½ year
Commissioner Paul Corbin

2008-2009

*Herb Landes
Porter Duvall
Allen Campbell
Chris Mitterer
Theresa Shick
Jack Corbin
Commissioner Paul Corbin

2010-2012

*Herb Landes
Porter Duvall
Allen Campbell
Tom McFarland
Theresa Shick
Jack Corbin
Commissioner Paul Corbin

2013-2016

*Herb Landes
Porter Duvall
Allen Campbell
Tom McFarland
Theresa Shick
Terry Shields
Commissioner Paul Corbin

2017

* Theresa Shick
Porter Duvall
Allen Campbell
Herb Landes (until 8/2017)
Tom McFarland
Terry Shields
Todd Beers (starting 9/2017)
Commissioner Herb Bullers

2018 - 2020

* Todd Beers (until 6/4/20)
Porter Duvall
Allen Campbell
Tom McFarland
Terry Shields
Theresa Shick
Commissioner Herb Bullers

JEFFERSON COUNTY CONSERVATION DISTRICT CHAIRMEN

1946-1957	Donald Smith
1958	Fred Depp
1959-1962	Ross Reitz
1963-1964	Robert Allshouse
1965	Donald Smith
1966-1968	William Smith
1969	Bernard Shick
1970-1977	William Smith
1978-1980	George Miller
1981	William Smith
1982-1985	Robert Steele
1986	William Smith
1987-1989	George Miller
1990	Robert Steele
1991-1992	George Miller
1993-1997	Lugene Inzana
1998-2000	Porter Duvall
2001-2004	Herb Landes
2005	Jack Corbin
2006	Porter Duvall
2007-2016	Herb Landes
2017	Theresa Shick
2018- 2020	Todd Beers
2021	Porter Duvall



1965 Staff and Directors



1969 Directors



1976 Staff and Directors



1990 Staff and Directors



2002 Staff and Directors



2015 Staff and Directors

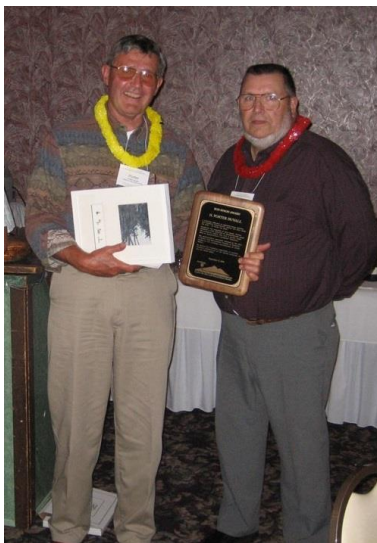
Conservation District Staff Throughout the Years

Employee / Position	Start Date	Leave Date
George Miller: Executive Secretary	1963	1967
Watson Lupher: Executive Assistant	1969	1971
Roby Grose: Executive Assistant District Manager District Technician	1/1/1972 7/1981 1/1/1996	8/31/1999
Robin Mottern: Secretary	1980	1981
Marie Kerchinski: Secretary	1981	11/1986
Mary McNutt: Secretary	12/1986	11/1987
Deborah Wilson: Secretary District Technician District Manager Executive Director	12/1/1987 1/1/1993 1/1/1996 7/1/2018	4/30/2020
Melissa Buck: Secretary Admin. Assistant	3/1994 (Part-time) 1/1/2001(Full Time)	1/31/2021
Mark Buhite: District Technician	1/1/1999	5/5/2001
Shaun Wessell: AmeriCorps Second Technician District Technician District/Watershed Tech. District Technician Assistant District Manager District Manager	9/5/1999 3/22/2000 5/6/2001 10/2008 2/10/2014 6/1/2017 7/1/2018	
Jessica Traister: Watershed Specialist	7/10/2000	1/10/2003
James Berry: ACT/Nut. Management Spec.	9/3/2001	9/6/2011
Todd Beers: Watershed Specialist	2/11/2003	11/15/2005
Scott Schaffer: Second Technician	3/10/2003	2/4/2005
Amber (Gillung) Siar: Watershed Spec.	2/1/2006	8/2008
William Sheldon: Resource Technician	6/19/2007 (Part-time)	9/30/2008
Byrne (Buddy) Brown III: ACT/ Nutrient Management Specialist	11/1/2011	5/11/2012
Megan Whitlatch: ACT/ Nutrient Management Specialist	7/2/2012	
Gordon Snyder: Watershed Technician	2/10/2014	12/5/2014
Grace Pesselato: Watershed Specialist	2/2/2015	1/31/2018
Carl Johnson: Resource Technician	2/2/2015	
Dana Grabowski: District Technician Watershed Technician District Technician	7/17/2017 2/1/2018 3/16/2020	
Rebecca Gaston: Conservation Technician	4/15/19 (Part-time)	
Lexie Arkwright: Watershed Specialist	3/16/2020	3/31/21
Christine Hughes: Administrative Assistant	2/08/2021	
Evan DeLong: Watershed Specialist	5/17/2021	

From its inception, the JCCD has always championed a cooperative approach to whatever challenge was presented. A hallmark of the organization is working with multiple agencies, bureaus and departments. Among those agencies which have, or still, report at the monthly meetings of the JCCD Board of Directors, are the PA Fish & Boat Commission, PA Game Commission, DCNR Bureau of Forestry, NRCS, Farmers Home Administration, Agriculture Stabilization Conservation Program, Pennsylvania Department of Transportation, Department of Environmental Protection, Vocational Agriculture, Penn State Extension, Bureau of Abandoned Mines and sportsmen's organizations.



In 1997, JCCD stepped forward again to help establish a new state-wide initiative designated as the Dirt and Gravel Road Program. It was subsequently expanded to include Low Volume Roads with a dedicated purpose of improving conditions and reducing run-off from dirt roads which comprise much of the mileage in the Commonwealth's rural areas. For this program, an important target of interest is to control sediment laden run-off from roads which could affect aquatic life in streams.



Porter Duvall, was honored in 2006 for his efforts helping to establish the DGLVR program.

The Center for Dirt & Gravel Roads

**BEYER AVENUE EXTENSION
YOUNG TOWNSHIP
JEFFERSON COUNTY**

BEFORE

Due to wetlands on both sides, there was a need to install 2 French Mattresses, 155' of underdrain, 3' of road fill and the replacement of cross pipes.

AFTER

1st Place Winner

2016 Calendar

In 2016, photos taken by Resource Technician Carl Johnson, won the first ever DGLVR program photo contest. The winning photos were also honored by being selected for the cover of the first calendar produced and distributed by the DGLVR program.

To list all the undertakings which have been administered or initiated by JCCD would require an extensive record, however, some of the more visible efforts have included involvement in the repair and restoration of both Cloe Lake and Kyle Run Dams. Additionally, passive mine treatment was undertaken at the former site of the Conifer Mine in Beaver Township and Sugar Camp Run which emanates from an old coal mine discharge near Sykesville.



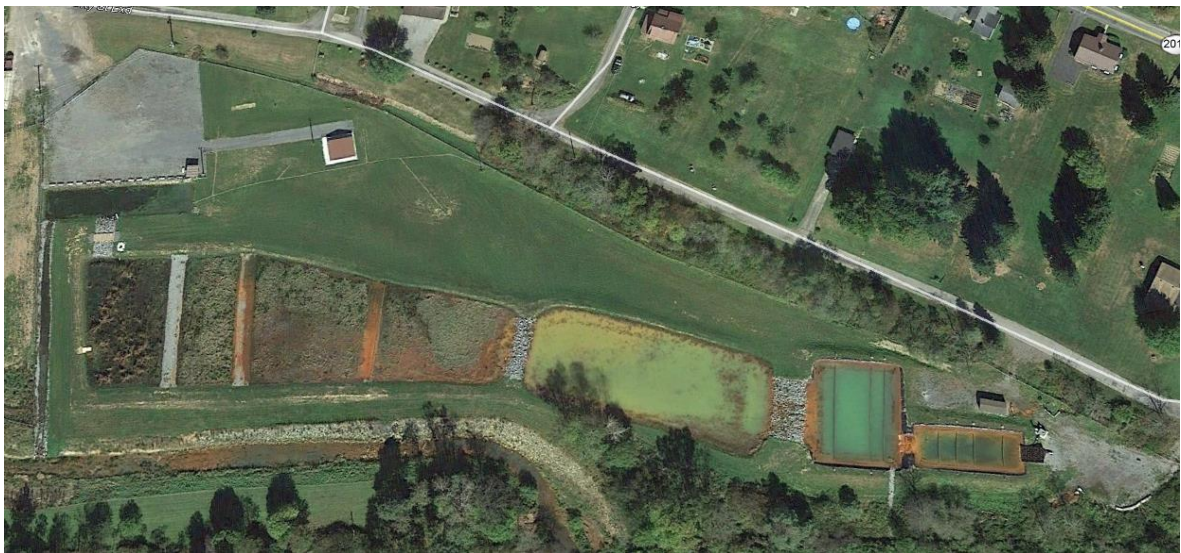
Cloe Lake

Former District Director, Bill Gresock, proudly displays the engraved stone placed at the entrance in Bell Township.



Conifer

A limestone bed was installed to treat abandoned mine drainage in Beaver Township using a Growing Greener Grant. The Redbank Creek Trust provided funding for ongoing operation and maintenance.



-Aerial Photography courtesy of: Google Earth Pro -

Sugarcamp

This project originated in 2002 when JCCD assessed abandoned mine discharge to investigate possible treatment with the ultimate goal of re-using treated mine water for industrial/commercial use, as well as a public water supply for the Borough of Sykesville. A series of ponds and wetlands were constructed to treat the drainage near Sykesville. Funding for this multi-phase project was obtained through Growing Greener Grants, DEP Bureau of Abandoned Mine Reclamation, Sykesville Borough, the JCCD and Winner Global Water Services.

Since its original inception as an agricultural-based organization with one part time employee, JCCD staff has grown to six full time employees and one part time employee and now handles a plethora of plans, permits, nutrient and soil concerns, as well as watershed and stormwater management issues. Educational efforts are incorporated into the life of JCCD personnel for not only school children but public officials and citizens alike, depending on the subject of interest.



Noteworthy among its operations is JCCD's stewardship of millions of dollars, accepted over time, which is carefully managed to administer grants, programs and other public endeavors. Through careful guardianship of its responsibilities, JCCD has ensured that numerous vendors and contractors are compensated for their work in a timely fashion.



Throughout its history, the JCCD has been housed in several locations following its humble beginnings in George Miller's home. These include the old Jefferson County Service Center, 180 Main Street in downtown Brookville and its current location at the Jefferson County Conservation Center in front of the Jefferson County Fairgrounds.



For more information on the District, please visit our website at www.jeffersonconservation.com or call (814) 849-7463.

Thank you for joining us on this memorable milestone occasion. We all look forward to future generations carrying on this worthy endeavor.

H. Porter Duvall
Chairman

*We Would Like to Give a Special Thank You
to Our Generous Door Prize Donors*

Allen & Darlene Campbell

310 Lawn & Garden

Brackman Chevrolet Buick

J&J Feeds & Needs

Ace Hardware

H&H Supply

CRW Home Center

R.D. Brown Memorials

West End Tire

Cobblestone Hotel, Punxsutawney

JAK'D Entertainment

Walker Auto Parts

Pizza Hut, Punxsutawney

Walmart, Punxsutawney

Tractor Supply

Ragley's True Value Hardware

Steve's Greenhouse & Florist

Mahoning Beer

Hoak Insurance Services

Dunlap Lawn & Garden

S&T Bank

