

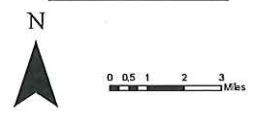
JEFFERSON COUNTY

Plate 5.
Landuse
Countywide Act 167
Jefferson County, Pennsylvania

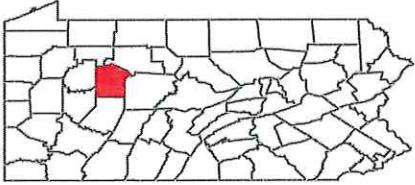
- Minor Streams
- Major Streams
- Waterbodies
- Highway
- Major Road
- County Boundaries
- Municipalities

- 2020 Future Land Use**
- Act 167 Land Use**
- Commercial and Business
 - Residential - 1 acre
 - Residential - 1/2 acre
 - Residential - 1/8 acre
 - Newly graded areas
 - Open space - Good Condition
 - Contoured Row Crops - Good Condition
 - Brush - Good Condition
 - Pasture - Good Condition
 - Meadow - Good Condition
 - Woods - Good Condition
 - Water

NOTE:
PORTIONS OF THIS MAP THAT ARE PROVIDED FOR SPATIAL
REFERENCE ONLY. THEY WERE GENERATED FROM EXISTING
SOURCES AND MAY CONTAIN DISCREPANCIES THAT HAVE NOT BEEN
CORRECTED AS PART OF THIS ACT 167 PLAN.



Location Map



JEFFERSON COUNTY

Plate 6.
Problem Areas
Countywide Act 167
Jefferson County, Pennsylvania

- Minor Streams
- Major Streams
- Waterbodies
- Highway
- Major Road
- County Boundaries
- Municipalities

ProblemAreas

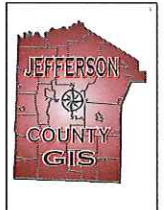
Capacity

- < 2YR
- 2YR<Q<10YR
- 10YR<Q<50YR
- 50YR<Q<100YR
- > 100YR
- N/A
- SWMFacilities

Act 167 Watersheds

- BIG RUN
- CANOE CREEK
- CLARION RIVER
- EAST BRANCH MAHONING CREEK
- ELK RUN
- LITTLE SANDY CREEK
- LITTLE TOBY CREEK
- MAHONING CREEK
- NORTH FORK REDBANK CREEK
- PINEY CREEK
- REDBAK CREEK
- SANDY LICK CREEK
- STUMP CREEK
- TOMS, CATHER, MAXWELL, BLYSON AND MCCAINA
- WEST BRANCH SUSQUEHANNA RIVER

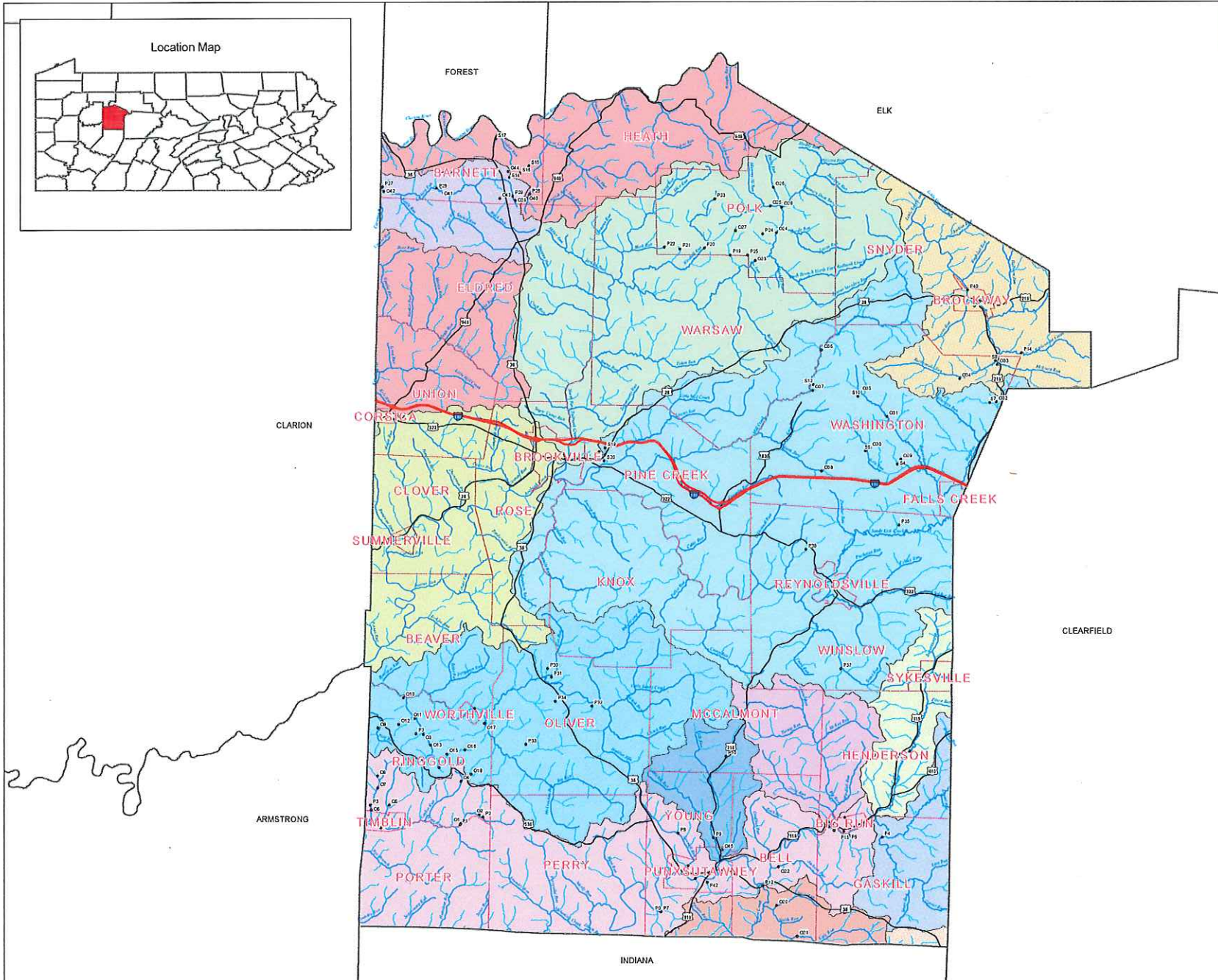
NOTE:
PORTIONS OF THIS MAP THAT ARE PROVIDED FOR SPATIAL
REFERENCE ONLY. THEY WERE GENERATED FROM EXISTING
SOURCES AND MAY CONTAIN DISCREPANCIES THAT HAVE NOT BEEN
CORRECTED AS PART OF THIS ACT 167 PLAN.



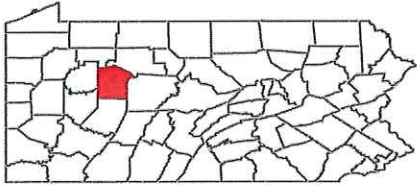
N



0 0.5 1 2 3 Miles



Location Map



JEFFERSON COUNTY

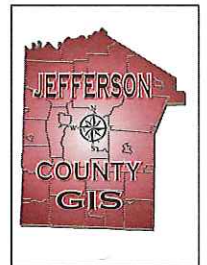
Plate 7.
Soils Map
Countywide Act 167
Jefferson County, Pennsylvania

- Minor Streams
- Major Streams
- Waterbodies
- Highway
- Major Road
- County Boundaries
- Municipalities

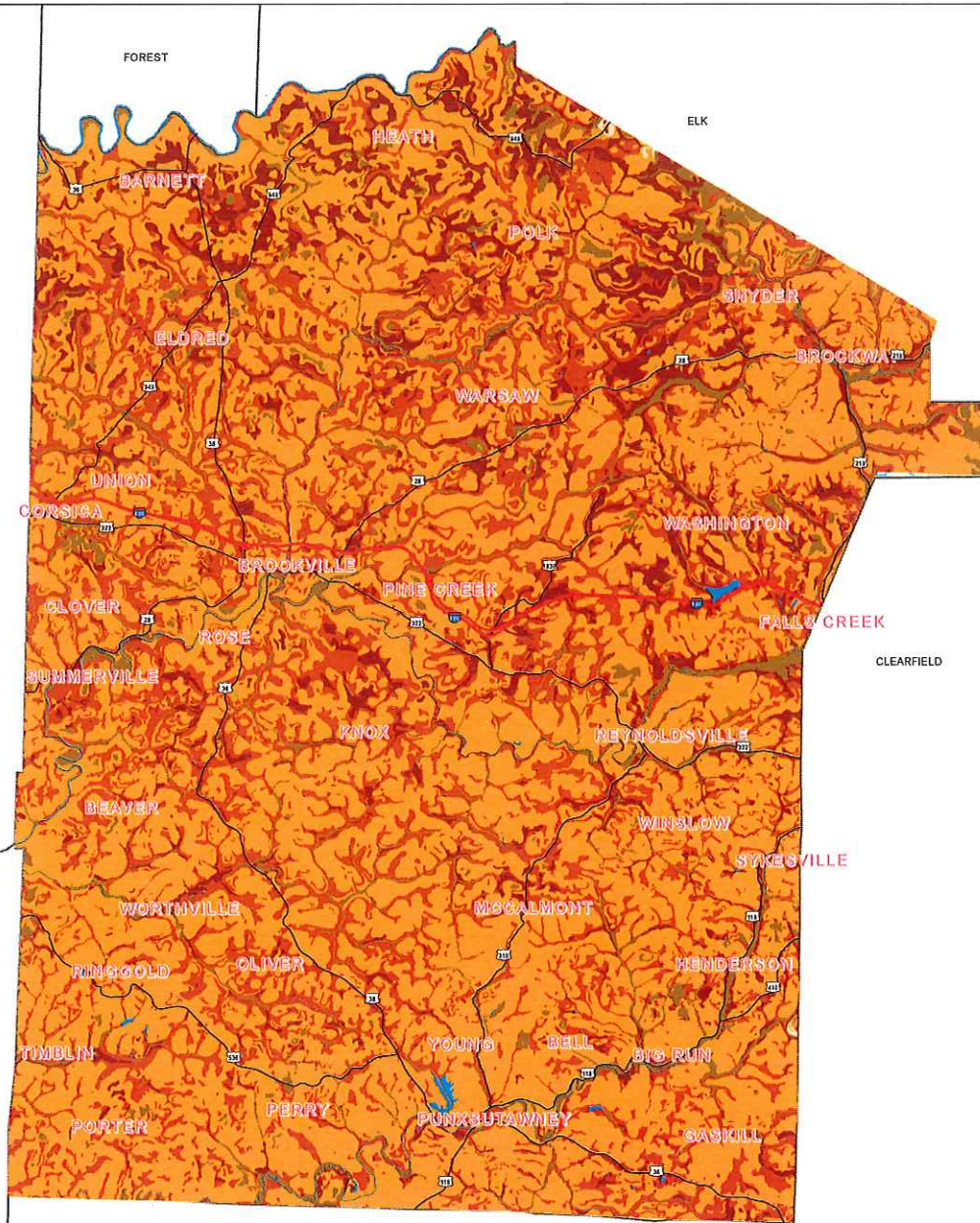
Jefferson Soils

- W - Water
- Low Runoff Potential**
- A
- Low to Moderate Runoff Potential**
- B
- B/D
- Moderate to High Runoff Potential**
- C
- C/D
- High Runoff Potential**
- D

NOTE:
PORTIONS OF THIS MAP THAT ARE PROVIDED FOR SPATIAL REFERENCE ONLY. THEY WERE GENERATED FROM EXISTING SOURCES AND MAY CONTAIN DISCREPANCIES THAT HAVE NOT BEEN CORRECTED AS PART OF THIS ACT 167 PLAN.



0 0.5 1 2 3 Miles



CLARION

CLEARFIELD

ARMSTRONG

INDIANA

FOREST

ELK

HEATH

BARNETT

POLK

SNYDER

BROCKWAY

WARSAW

WASHINGTON

BROOKVILLE

PINE CREEK

FALL CREEK

ROSE

KNOX

REYNOLDSVILLE

SUMMERVILLE

BEAVER

WINFLOW

SIKESVILLE

WORTHVILLE

MCCALMONT

HENDERSON

RINGGOLD

OLIVER

YOUNG

BELL

BIG RUN

TIMBLIN

PORTER

PERRY

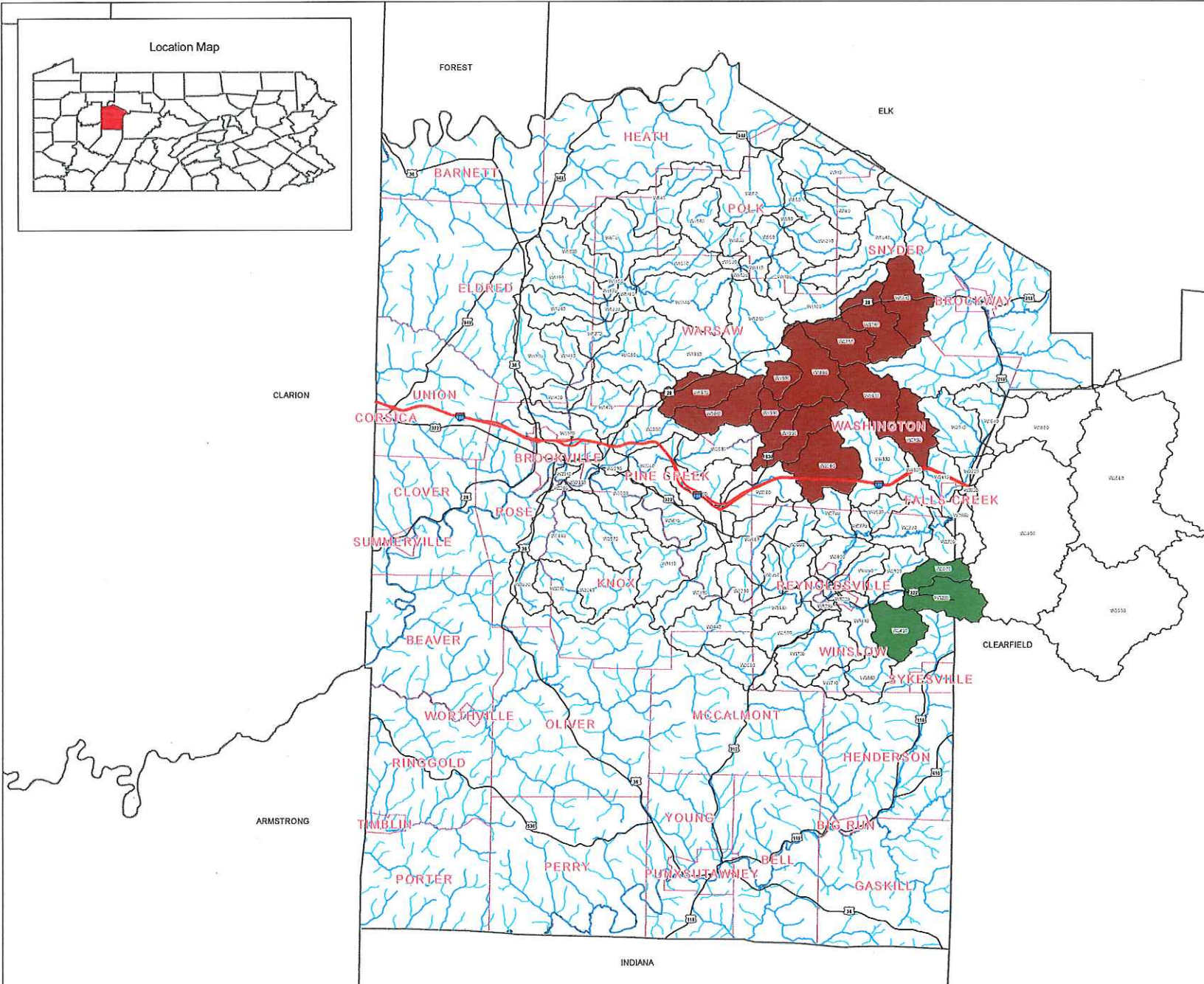
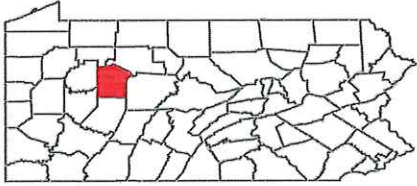
PUNKUTAWNEY

GASKILL

JEFFERSON COUNTY

Plate 8.
Stormwater Management Districts
Countywide Act 167
Jefferson County, Pennsylvania

Location Map

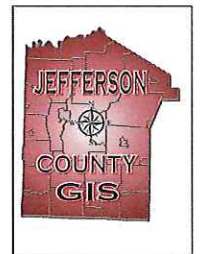


- Minor Streams
- Major Streams
- Waterbodies
- Highway
- Major Road
- County Boundaries
- Municipalities

SWM Management District

- 80% for 10, 25, 50, and 100 year storm events
- 90% for 10, 25, 50, and 100 year storm events
- 100% for 10, 25, 50, and 100 year storm events

NOTE:
PORTIONS OF THIS MAP THAT ARE PROVIDED FOR SPATIAL
REFERENCE ONLY. THEY WERE GENERATED FROM EXISTING
SOURCES AND MAY CONTAIN DISCREPANCIES THAT HAVE NOT BEEN
CORRECTED AS PART OF THIS ACT 167 PLAN.



0 0.5 1 2 3 Miles