

Agriculture Newsletter
Summer 2022



Grazing Field Day

A Grazing Field Day is planned for **Wednesday, June 29th, 2022** from 10am - 2pm at Sandy Lick Farms, a beef operation owned and operated by Dr. Del Moore and Sue Moore in Summerville, PA.

Topics of discussion will include soil health, fence & watering tips, forage species, financial and technical assistance available, as well as a tour of the farm that highlights best management practices that improve soil health and protect water quality. Guest speakers will include Dr. Sjoerd Duiker, a soil science professor from Penn State, and Russ & Emmy Wilson of Wilson Land & Cattle Company. Lunch will be provided.

Registration required by June 23rd. Cost to attend is \$10.00 (you can mail a check or pay at the door). To register, contact the District by mail/phone/email:

Jefferson County Conservation District
1514 Route 28 Brookville PA 15825
(814) 849-7463
megan@jeffersonconservation.com.

Financial and other support for this project is provided by the Pennsylvania Association of Conservation Districts, Inc. through a grant from the Pennsylvania Department of Environmental Protection under Section 319 of the Clean Water Act, administered by the U.S Environmental Protection Agency.



In this Edition:

~~~~~

**Grazing Field Day**

~~~~~

**Highly Pathogenic
Avian Influenza (HPAI)**

~~~~~

**Manure Stacking Guidelines**

~~~~~

**Conservation Reserve
Enhancement Program**

~~~~~

**Jefferson County Fair**

~~~~~

Sykesville Ag & Youth Fair

~~~~~

**Ag Progress Days**





## Highly Pathogenic Avian Influenza

### Protect Your Flock Against Avian Flu

The highly contagious and deadly avian influenza (HPAI) has been detected in PA and is an urgent, high-level threat.

### Protection starts with biosecurity

- If you have a site-specific biosecurity plan, follow it
- Keep visitors to a minimum
- Wear personal protective equipment
- Enclosures must be empty for a thorough cleaning
- Remove all litter, manure, and other debris
- “Dry” clean all surfaces. Brush, scrape, and shovel off manure, feathers, and other materials. Disinfectant will not penetrate caked-on dirt.
- “Wet clean all surfaces. Scrub with water and detergent. Work from top to bottom and back to front.
- Rinse all surfaces carefully with water
- Apply disinfectant according to the directions on the label. Be sure to use a disinfectant that is registered by the Environmental Protection Agency and indicates that it is effective against avian influenza.
- Leave the enclosure empty until it is completely dry. Use fans and/or open doors and windows to help speed the drying process. Wet surfaces can be harmful to poultry .
- When you’re done remove and discard your protective gear. If using dedicated clothing and boots, change clothing and clean and disinfect your boots.
- Wash your hands thoroughly with soap and water. Wash and dry your dedicated clothing.

### Look for signs of HPAI

- Sudden increase in mortality
- Decreased feed or water consumption
- Decreased energy (lethargy, depression)
- Decreased egg production
- Soft-shelled, thin-shelled, or misshapen eggs
- Swelling or purple discoloration of the head, eyelids, legs or feet
- Difficulty breathing
- Coughing, sneezing, nasal discharge
- Incoordination, stumbling
- Abnormal position or twisting of the head/neck
- Diarrhea

If you suspect HPAI in your flock, call the PDA hotline immediately. Do not move the birds. There is no penalty for calling and testing for surveillance is free.

Pennsylvania Department of Agriculture (PDA)

Emergency number 717-772-2852 (press option 1 to reach the veterinarian on call)

For more information, resources, and the latest developments in the fight against HPAI, go to the Penn State Extension web page at [extension.psu.edu/avian-influenza](http://extension.psu.edu/avian-influenza).





## Manure Stacking Guidelines

Listed below are guidelines on manure stacking derived from the Pennsylvania Department of Environmental Protection Manure Management Manual. Following these guidelines will help protect water quality on your farm and in your watershed.

- Manure stacking in the farmstead must use an improved stacking pad or covered area. (*Note: an improved stacking pad is considered a permanent, improved, stabilized and compacted surface area with runoff controls to prevent a polluttional discharge used for the storage of solid manure which is capable of being stacked at least 4 feet high*).

The requirements relating to stacking of manure in other areas, such as on crop fields are:

- Keeping all stockpiles/stacks at least 100 feet from sensitive areas such as streams, lakes and ponds, 100 feet from any open sinkhole, 100 feet from any drinking water well (public or private). These stacks cannot be placed within an area of concentrated water flow such as a swale, ditch or waterway.
- Stockpiling/stacking manure on properly constructed improved stacking pads whenever possible. When stockpiling/stacking on unimproved areas in crop fields, the stockpiles/stacks should not be in the same location each year.
- Placing these areas at the top of a hill (this includes the area within 100 feet from the top of the slope), where possible, diverting upslope water away from stockpile/stacking areas.
- Placing stacks on areas with less than 8% slope.
- The manure must be dry enough to allow for stacking at least 4 feet in height. When stacked on the application field, the volume needs to be limited to the amount that can be spread on fields nearby to the stack.
- When stacked on the application field, cover stockpiled/stacked manure with a plastic tarp or other similar water repellent cover if it will be in place for more than 120 days. Manure stacked on a properly managed improved stacking pad does not need to be covered.



## Conservation Reserve Enhancement Program

The Conservation Reserve Enhancement Program, administered by the Farm Service Agency, pays landowners to conserve and enhance their land. Land enrolled in CREP is removed from production and grazing under a 10 - 15 year contract. Enrollees agree to establish and maintain approved conservation practices designed to improve water quality and enhance wildlife habitat on environmentally sensitive land. Eligible practices include forested riparian buffers, and establishing native or cool season grasses. For more information or to enroll, Jefferson County farmers can contact the FSA office in DuBois at (814) 375 - 1297. Additional information can also be found at [www.creppa.org](http://www.creppa.org).



## Jefferson County Fair

**July 17 - 23, 2022**

The daily pass is \$10.00 per person and includes the following: Parking, Grand Stand Events (Except Wednesday Night - must purchase additional ticket), Exhibits, Petting Zoo, Animal Shows, Museum, Community Stage Events.

Admission on Monday, July 18 will be discounted at \$5 per person and include all of the above mentioned items.

Weekly passes for Fair Week will be available for the discounted price of \$40. Weekly passes cannot be purchased after Monday, July 19th at 6pm. These passes do include wristbands for carnival rides.

Visit <https://jeffcofair.com> for more details.

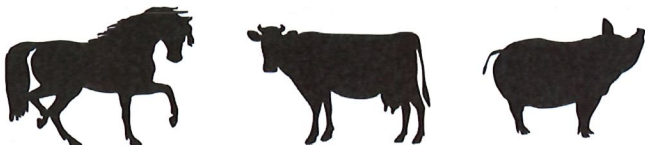
## Sykesville Ag & Youth Fair

**June 20 - 25, 2022**

Located at: 400 Fairgrounds Rd.  
Sykesville, PA 15865

New dates with the same 30 year community tradition filled with fun, carnival rides, food, animals, exhibits, track events, and more.

Visit [www.sykesvillefair.com](http://www.sykesvillefair.com) for more details.



## Ag Progress Days

**August 9 - 11, 2022**

Tuesday (9th) 9:00am—5:00pm

Wednesday (10th) 9:00am—7:00pm

Thursday (11th) 9:00am-4:00pm

*At the Russell E. Larson Agricultural Research Center, 2710 West Pine Grove Rd, Pennsylvania Furnace, PA. 9mi. SW of State College PA*

### **Penn State's Ag Progress Days Includes:**

#### **Demonstrations**

- Field machinery & crops
- Horse training & health
- Home & farm safety
- Gardening & beekeeping
- Small-scale vegetable farming

#### **Educational Presentations & Tours**

- Dairy, livestock, & equine
  - Field & forage
- Energy & environmental resources
  - Horticulture
- Forest stewardship & wildlife mgmt.
  - Crop mgmt.

#### **Interactive Events & Activities**

- Pasto Agricultural Museum
- Educational exhibits & expert advice in the College Exhibits Building
  - Health screenings & safety
  - Healthy families & cooking demonstrations
- Master gardener flower & vegetable gardens

#### **Youth & Family Fun**

- 4-H program opportunities in animal science; hobbies, careers, and some interesting animals
  - A-Maze-N Corn
  - Live butterfly exhibit

*Parking is free. Visit [apd.psu.edu](http://apd.psu.edu) for more information.*